

DACRI Data Acquisition & Control Robotic Instrument

The DTx Data Acquisition & Control Robotic Instrument (DACRI) integrates data acquisition, sensor and process control into a single, low cost system. DACRI simulates any machine that controls processes, material, and specimen handling like many medical and industrial automation devices. By integrating hardware capabilities offered by CONTEC with DTx design and manufacturing services, DTx can reduce product complexity and enhance technology while lowering product and manufacturing costs.

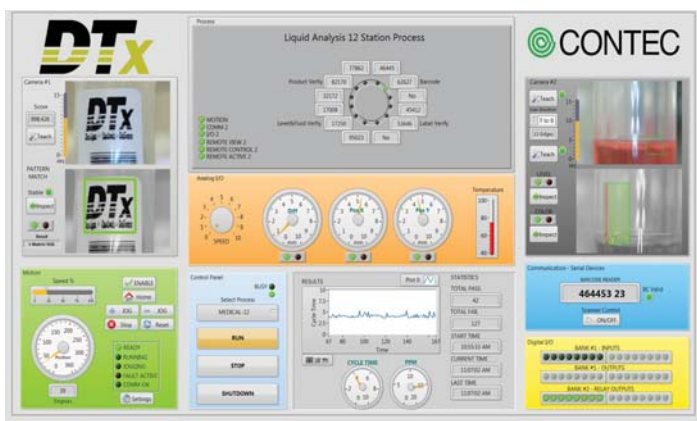
Features/Capabilities

- Single chassis houses computer system as well as data acquisition, sensor and motor control cards
- Long life cycle technology
- Complete digital and analogue controls, DA/AD, digital I/O, voltage and current sensors, relays and proximity sensors
- Vision processing capabilities
- PCI Express data acquisition controller boards
- Remote diagnostics and monitoring
- Test automation software compatible with programs like NI Labview and CVI
- Plug and play installation
- Software runs on Windows XP or newer



Benefits

- Reduced product size and complexity
- Easy hardware and software integration
- Simplified installation process
- Reduced costs related to:
 - Product development
 - Deployment
 - Installation
 - Manufacturing
 - Hardware & software
 - Logistics
 - Maintenance
- Quick time to market
- Reduced downtime
- Limited software development time
- Increased reliability



DACRI Graphical User Interface



1800 Penn Street • Melbourne, FL 32901 • 321.728.0172 • www.DTx.com

Note: All Specifications are subject to change without notice.

